

Kilometro Rosso Science and Technology Park



Corporate Presentation

@KMR: share to innovate and to compete

- Kilometro Rosso Science and Technology Park is a **knowledge, innovation** and **high technology district**.
- Partners established within the Park share and promote the **Open Innovation** paradigm: to remain competitive in a global environment it's key to share research and innovation efforts.



@KMR: services and spaces to innovate

- KMR attracts innovative companies, start-ups, technological institutions and research centers offering a portfolio of **value added services**.



- KMR offers laboratories and office spaces with **flexible layouts** and **advanced technological solutions** to meet the most demanding individual needs.

@KMR: services to the community

KMR offers a unique set of services, both **directly** and by leveraging **Partners' competencies**:

- **Research and Development Services** (patents, consulting, technology transfer platforms, business partnering, etc.).
- **Networking** for new projects and ventures; shared research efforts.
- Training and **education**.
- **Incubation** and **acceleration**.
- **Promotion, marketing and communication** of Partners' activities.



Architecture as enabler

- KMR was developed on the intuition that an **architecturally appealing location** and **modern layouts** might facilitate the innovation processes.
- **Jean Nouvel, SOM** (Skidmore, Owings & Merrill), **Richard Meier** and other important architects worked to create KMR.



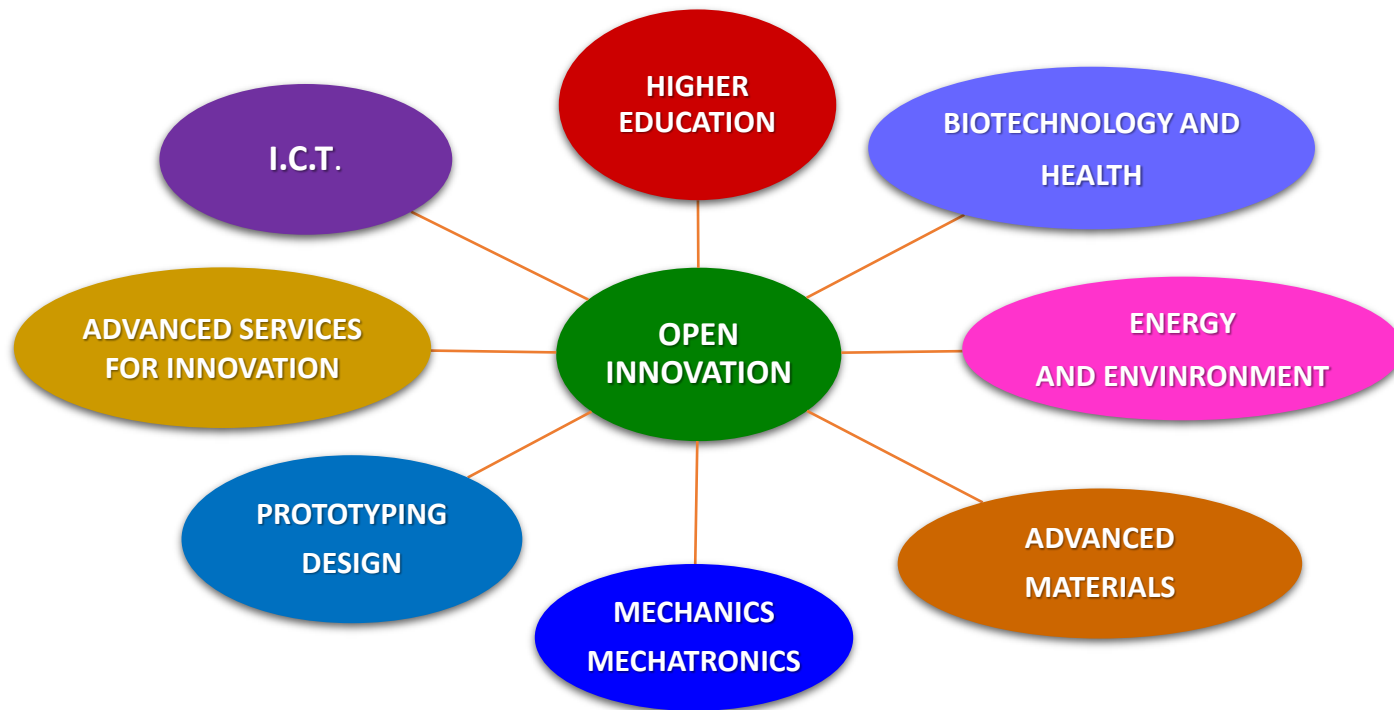
KMR today: a growing reality

- Active since **2009**; 100% private
- **50** established **Partners**
- More than **1.600 researchers, technicians** and employees
- 50.000 hosted visitors
- Applications to national and international tenders: **27 projects** totaling more than **€ 70 millions in financing**
- Host to more than **80 events** every year
- Member of the following networks:

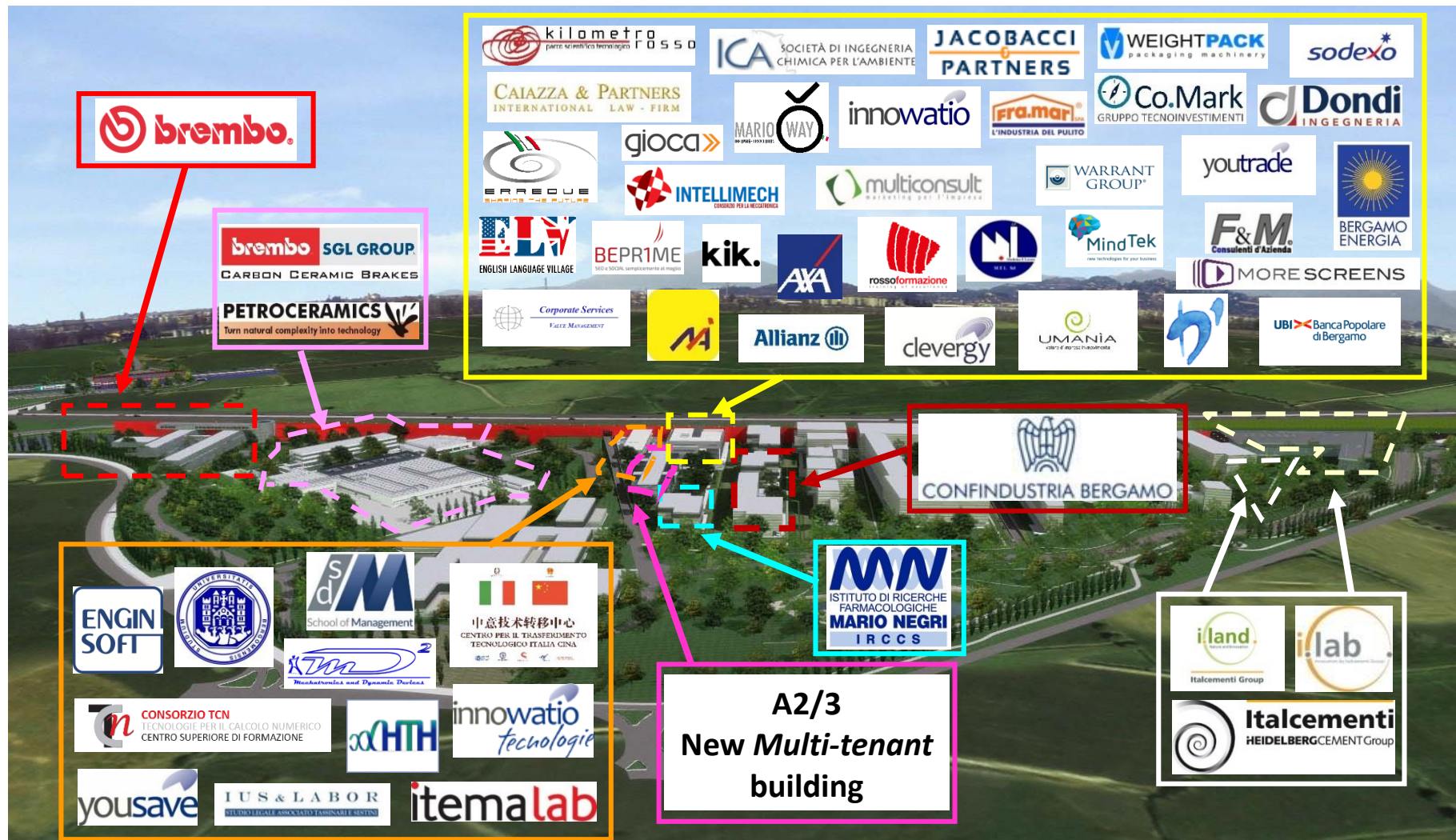


Diversity as a value: KMR «Technology Clusters»

- KMR facilitates open innovation and cross fertilization processes promoting **multidisciplinary initiatives**.
- Established Partners and active innovation projects can be classified in **technology clusters**.



KMR Official Partners

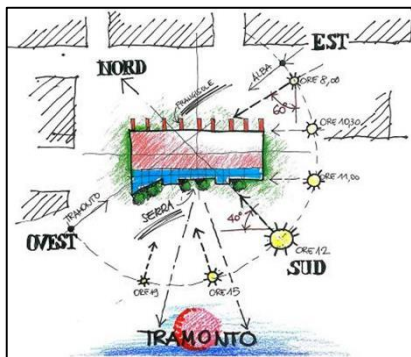


KMR is growing: new *multi-tenant* building A2/3

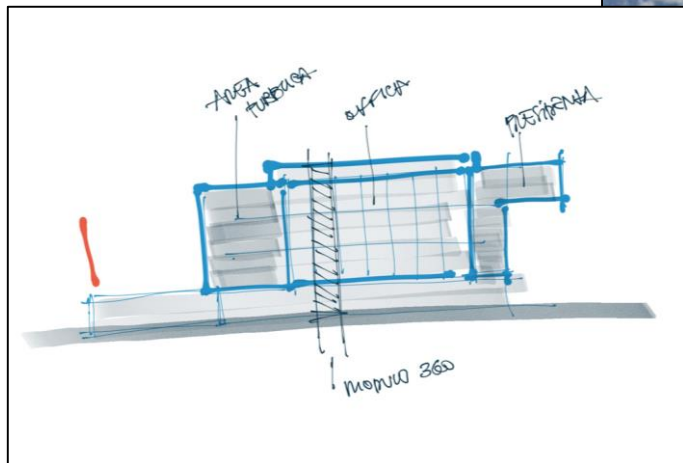


- New building with **7.500 sqm** surface, designed to host **laboratories, offices** and **shared services** (*completion by summer 2017*).
- New **caffetteria** and **smart working spaces** on ground floor.

KMR is growing: new *multi-tenant* building A2/3



KMR is growing: new Entrepreneurs Association HQ



- **Golden Leed** building of **7.000 smq** surface.
- The building will host representative offices and operating departments of: **Confindustria BG, Servizi Confindustria Bergamo S.r.l., Forma, Unimpiego BG.**

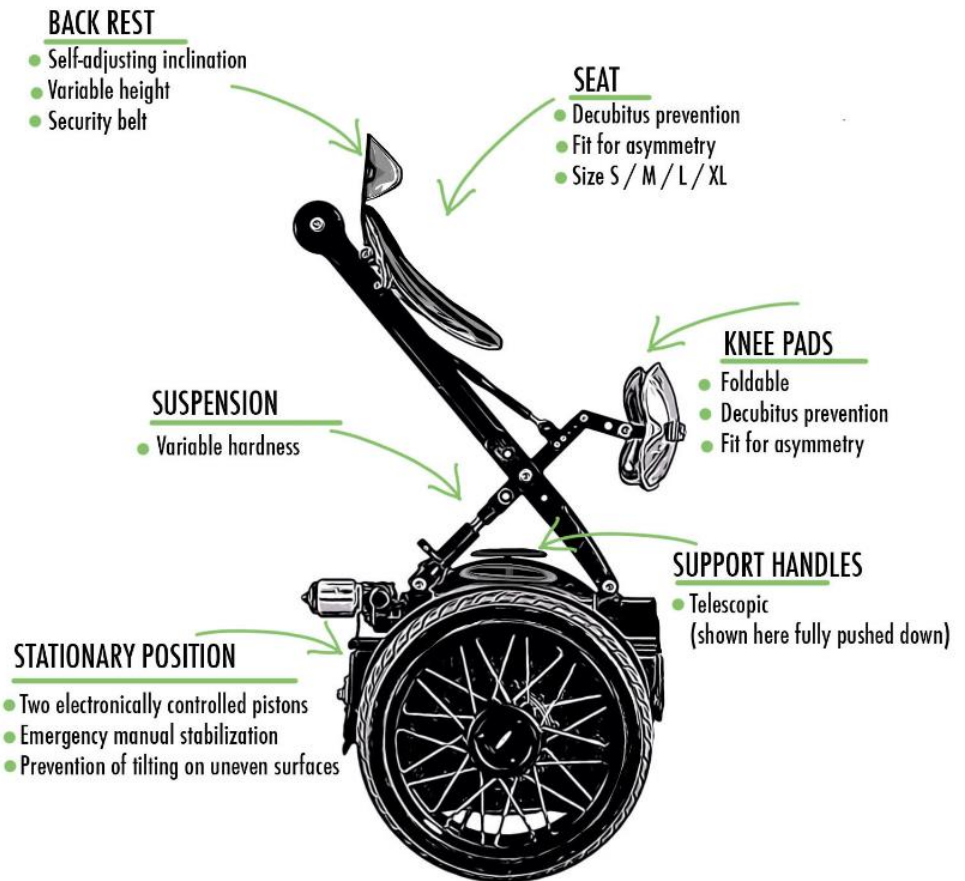
Open Innovation @KMR: *Intellimech*

- Private consortium of 22 leading companies which promotes R&D in Mechatronics.
- Synthesis of:
 - Co-operation
 - Co-opetition.



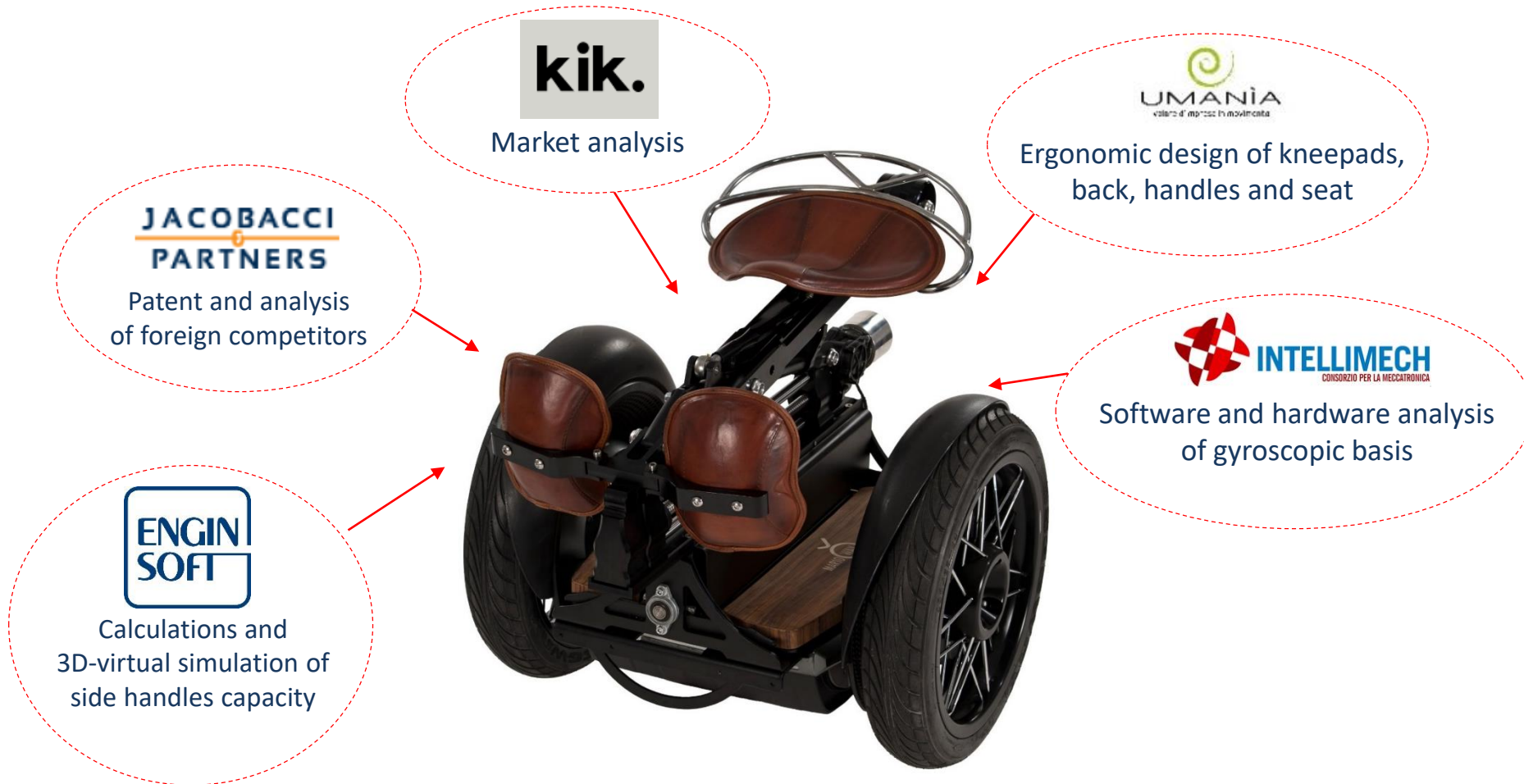
Open Innovation @KMR: *Mario Way*

- Ergonomic and self-balancing mobility device, designed primarily as an aid for people with limited mobility



Open Innovation @KMR: *Mario Way*

- Partners involved and developed synergies



Open Innovation @KMR: *Progetto Cobra*

- Research project sponsored by the European Commission (LIFE) to develop a production technology for brake pads based on cement.

